

WWW.HAIYONG.COM

更多信息

2018 Catalogue



宁波海涌明大塑料机械有限公司

Ningbo Haiyong Mingda Plastic Machine Co.,LTD.

地址：宁波市北仑区小港街道东港研工业区

Add : Donggangqi Industrial Zone, Xiaogang Town, Beilun Area,
Ningbo, china 315211

电话 /Tel : 0574-86689822 87608693 87608036

传真 /FaX : 0574-87608036 87608693

邮箱 /E-mail : john@haiyong.com

www.haiyong.com

公司保留对其产品规格和尺寸更改权利，最终产品信息以实物为准，照片仅供参考

实力铸造品牌

Our Brand Is Our Strength

企业简介 / Brief Introduction

宁波海涌明大塑料机械有限公司是中国领先的注塑机提供商。公司成立于 2002 年，坐落于宁波市北仑区小港街道东港研工业区，占地 20000 平方米，拥有自己独立的研发，制造，销售团队。宁波海涌拥有完整的产品线和融合解决方案，通过全系列的注塑机产品，灵活满足全球不同客户的差异化需求以及快速创新的追求。我们的注塑机市场占有率在行业中处于前列，HY 系列和 HYW 系列产品获得用户广泛好评。海涌坚持持续技术创新为客户创造最大价值为愿景，围绕客户的需求持续创新，与合作伙伴开放合作，致力于为客户提供价格合理，性能稳定，具有竞争力的注塑机产品，持续提升客户体验，为客户创造最大价值。目前，海涌的产品已经广泛应用于中国，泰国，马来西亚，智利等多个国家和地区，服务全球 1/5 的人口，并开始向欧洲，美洲，俄罗斯，印度，中东和非洲市场拓展。凭借不断增强的创新能力、突出的灵活定制能力、日趋完善的交付能力，海涌赢得客户的信任与合作。海涌明大坚持在全球范围内贯彻可持续发展理念，实现社会、环境及利益相关者的和谐共生。我们将“创新、融合、绿色”理念贯穿到整个产品生命周期，以及研发、生产、物流、客户服务等全流程，为实现全球性降低能耗和二氧化碳排放不懈势力。

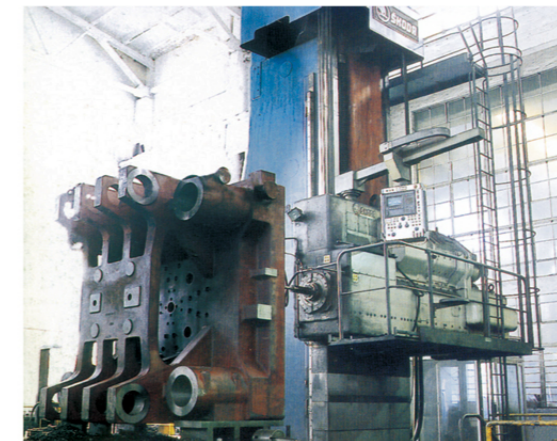


Ningbo Haiyong Mingda Plastic Machine Co., Ltd. is a leading supplier of injection moulding machines, located in the Donggangqi Industrial Zone, Xiaogang Town, Beilun Area, Ningbo. It covers an area of 20,000 square-meters. We have independent research and development, manufacturing and sales team. Haiyong has comprehensive product range, covering virtually every sector. The company's broad range of expertise and flexibility in these areas allows it to satisfy the demands of global operators and assist them in their pursuit of innovation. Our machine's share is at the top level of plastic injection moulding machine industry, HY and HYW machines is obtained wide acclaim by customers. Haiyong insist on continuing technological innovation to create maximum value for customers, continued innovation around the customer's needs, cooperating well with partners Haiyong is committed to providing customers with reasonable prices, stable performance, competitive injection molding machine products, continuing to improve customer's experience with our machines. Haiyong have been deployed by operators in China, Thailand, Chile, Malaysia, serving one-fifth of the global population. Now, we are seeking new partners to expand our market in Europe, America, Russia, India, Middle East and Africa. With the growing power of innovation ability, outstanding flexible customization capability, improving delivery ability, Haiyong won customers' trust and cooperation. Haiyong insists to implement the concept of sustainable development. Haiyong has incorporated innovation, technological convergence and the concept of "going green" into the product life cycle. Our company also is committed to maximizing energy efficiency and minimizing the CO₂ emissions.



以技为魂，卓尔不群。一流的人才、一流的技术、一流的管理，打造出一流的塑机品牌；以及“品质至上，务实创新”为宗旨，用实际行动不断开拓进取，开创中国塑机业的新纪元。

Be proud of the technology as the soul. Awe-inspiring and outstanding. Combined with top talents, latest technology and high standard management, we make the first-class brand of injection machines. With "High Quality, Pragmatism and Innovation", we are committed to continuously make the progress, and create a new era of the plastic machinery industry of China.



电控 / Electronic control

反应速度快，系统稳定

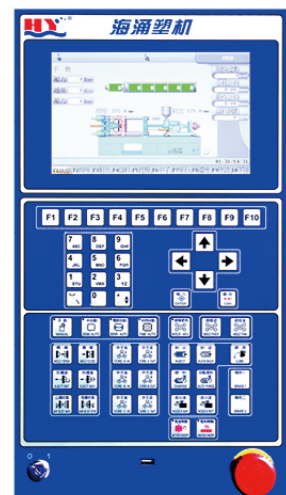
Quick Reaction Stability System

电控部分

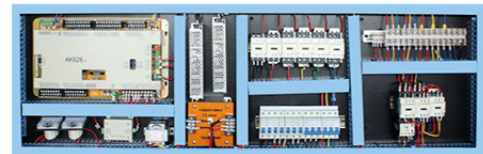
量身定做的注塑机专用电脑，具有高的响应速度，适时监控各项数据，使人机界面更具人性化。

Control Part

Toilored to the injection molding machine special computer,high speed response,timely monitoring various data,make the man-machine interface is more human.



控制电脑 Computer



电器 Electric

特点

- 专用的塑机控制电脑，控制和现实相对独立，可靠性好
- 工艺参数预设及存储功能
- 参数资料保护功能
- 料筒温度偏差自动校正
- 异常报警功能
- 前后门紧急停止按钮
- 实时监测显示各动作的运行情况
- 电机安全保护装置
- 机械手接口
- 下料光电开关
- 系统硬件 I/Q 检测功能
- 通过电脑设定和 PID 闭环方式精确控制料筒温度
- 屏幕保护功能，延长显示屏的使用寿命
- 全封闭电器控制箱，电气元件排布整齐，互不干扰

Features

- Special PLC computer controller for plastic injection machine use, control and display relatively independent with high reliability
- Technical parameters pre-setting and storage function
- Parameters information protection function
- Charging barrel temperature deviation automatic adjustment function
- Abnormal alarm function
- Front and back door emergency stop button
- Timely monitoring can display the condition of each motion
- Electrical motor safety protection device
- Robotic pincher interface
- Material feeding photoelectric switch
- System hardware I/Q detection function
- Charging barrel temperature is controlled accurately by computer setting and PID closed-loop manner
- Screen protection function,prolong the life of screen using
- Full-enclosed electrical-controlled box, electrical components are neatly arranged, never interfere with each other.



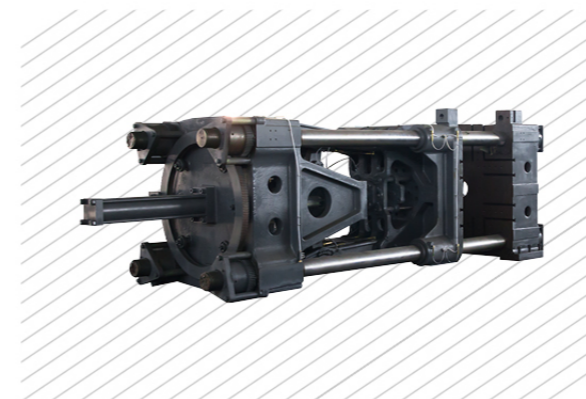
注射部件 Injection Unit

稳定的注射装置

注射部件采用双缸平衡注射，双导柱直线导轨支承。丰富的专用螺杆库供客户选着于满足各种注塑料材料的成型加工，并可配合多种专用注塑装置，方便了客户。采用了高性能低速大扭矩液压马达直接驱动螺杆预塑。

Stable injection device

Injection components use dual-cylinder balance injection unit and duple -leaders direct line rail supporting .a rich special screw libray can be choose customers and can be fitted with a variety of injection molding. furthermore, the be compatible with a variety of special injection devices, convenient for customers. they use high-performance low-speed torque hydraulic motor directly driving a large pre-plastic screw.



合模单元 Clamp Unit

可靠平稳的锁膜结构

合模部件通过计算机仿真，从运动学和动力学特性进行了整体优化，采用了技术领先的斜排五支点双曲肘锁膜机构，模板经有限元分析，创新了空心球面结构的头板，箱式支架板和模板连体结构等，确保合模部件的高刚性和高可靠性，达到开合模平稳，锁膜牢靠，同时超大的拉杆内间距，可安装较大的模具。

Stable and reliable clamping unit

Clamping components b y computer simulation, the overall optimization from the kinematic and dynamic characteristics, using the technology-leading five-point double toggle oblique clamping template by finite element analysis, innovation of the hollow spherical structure of the head board plywood box frame structure and templates Siamese, etc. to ensure mold parts is high rigidity and high reliability, to achieve a smooth opening and closing mold mode-locked solid, large distance between the lever mold can be installed.

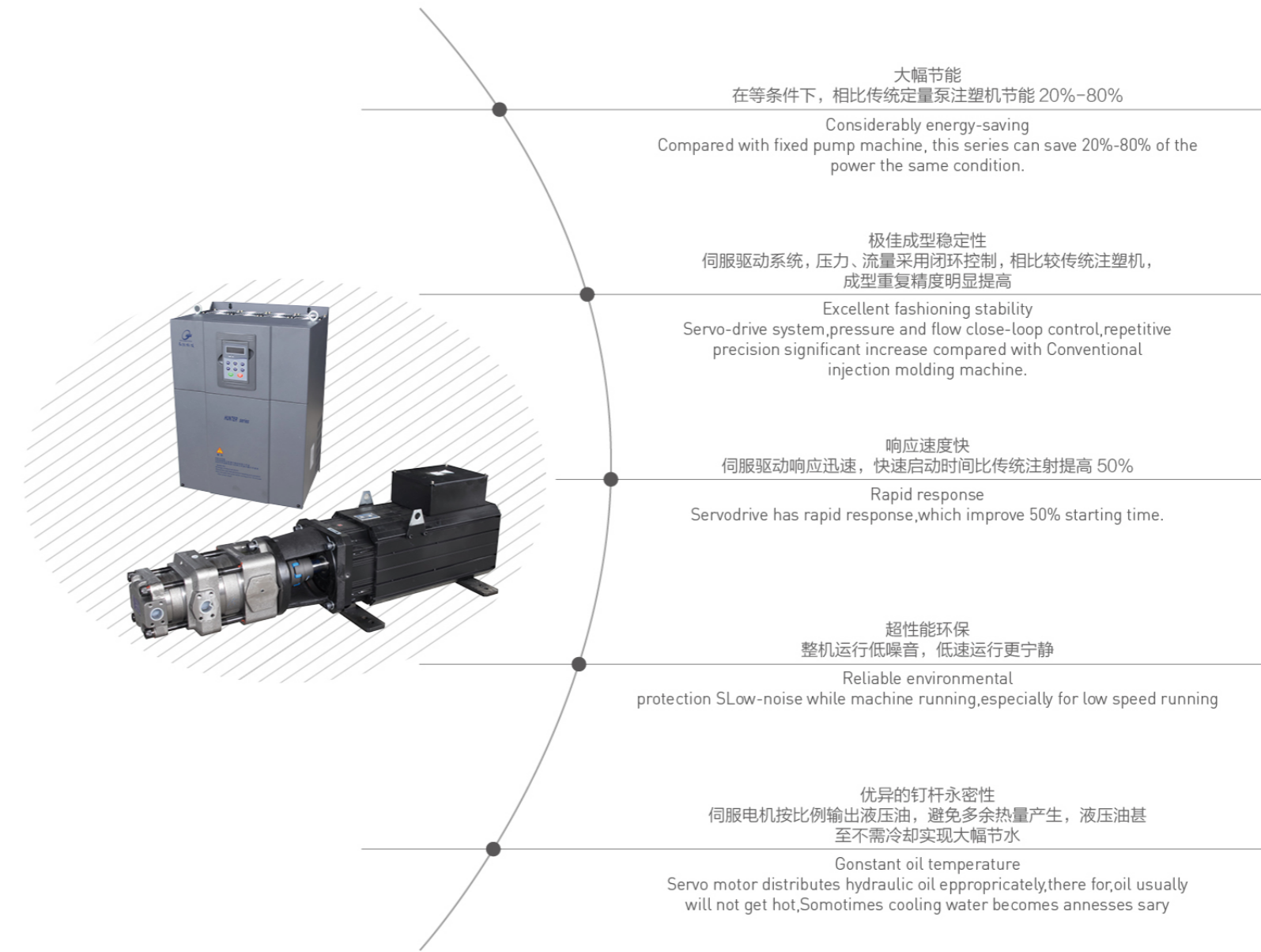
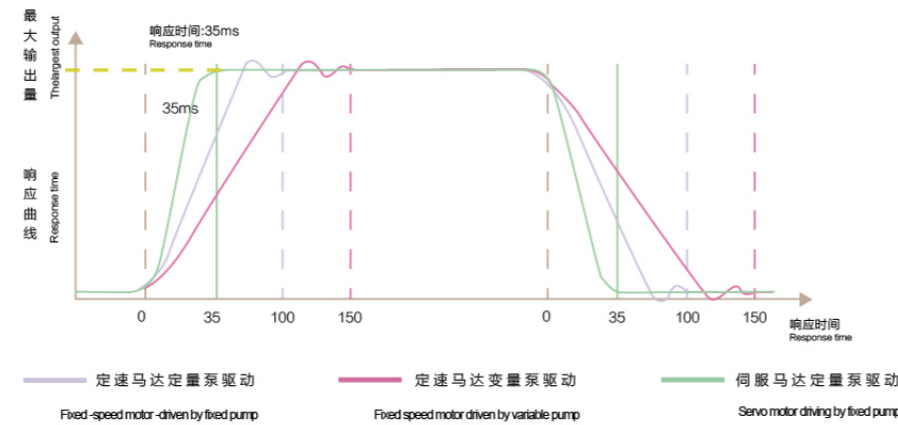
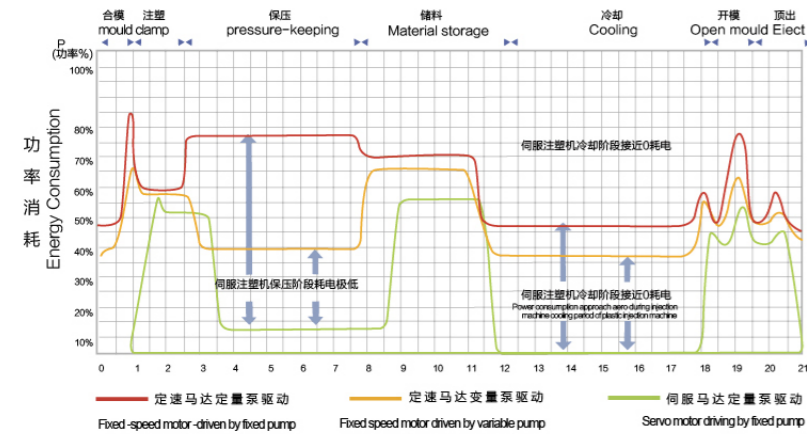
L 系列伺服节能注塑机 / L Series Servo Energys-Saving Injection Molding Machines

系统功率消耗比较

The comparison of systemic Power consumption

伺服节能注塑机，输出功率随负载变化而变化，不存在多余能量的浪费。冷却极端电机不工作，耗电为 0。伺服节能注塑机相比传统注塑机可节省 20% -80%，给您带来真正的省电享受，经济效益显著。

Servo energy-saving injection molding machines;There is no extra energy consumption due to output Volume changes according to load.The cooling motor doesn't work and consumes no energy. Servo energy-saving injection molding machines will save 20%-80% energy and bring you prominent economic.



HYW-H 系列（高速精密注塑机） / HYW-H Series (High-speed precision injection molding machine)



此机型采用进口高性能蓄能器，注塑采用差运动方式，适合精度要求高的超薄塑料产品的成型。

This model uses imported high-performance accumulator device, injection molding method using differential movement, suitable for high precision thin-wall plastic molded products.

HYW-PVC 系统（管道接口专用机） / HYW-PVC Series (PIPE Fitting Machine)



根据 PVC 产品特点，多项结构、配置经过优化改进，生产效率更高，工艺更加稳定。

PVC according to product characteristics, a number of structures, improved configuration has been optimized, efficient production, process more stable.

HYW 系列热固性注塑机 / HYW Series special injection moulding machines for thermosetting plastics



此系列注塑机采用复合材料的模具隔热装置，专用热煤油内循环料筒，配有专业设计的热固性塑料的螺杆组件，适合于加工各种热固性塑料。

These series use heat insulation device of complex materials on mold and special barrel of thermoset internal circulation, match specially designed thermosetting screw sets, be suitable to process all kinds of thermosetting plastics.

HYW-H 系列 (PET) / HYW-H Series (PET)



HYW-PET-series high speed Preform injection molding machine

Specially made PET screw highly increases the plasticizing speed and shot weight, lowers the plasticizing temperature and AA value, also lowers the shearing of preform, while achieves better transparency.

The servo motor control system can save energy by 30% ~ 50%, Different models are available for the choice of customers.

Increasing eject force ejector stroke, accepts PET preform molding.

Whole closed safe door meets the requirement of sanitary and thermo-control.

Hot runner system interface is included.

Optional with pressure holding and charge at the same time, which can increase the output by 15% ~ 25%.

Whole production project can be provided, including moulds, injection molding machine, PET stretch blow molding machine and auxiliary equipments.



Compact PET Bottle Producing machine line

CM automatic stretch blow molding machine is equipped with patented preform loading system, which consists of two manipulators: rectilinear manipulator and overturning manipulator. The rectilinear manipulator moves preform with neck up to the preform holder, after heating, the overturning manipulator grips heated preform and overturn 180 put preform to blow station with neck down. After stretching and blowing, the bottle is taken off by overturning manipulator. The specially designed preform loading & bottle discharging system avoid possible damage to preform & bottle during transportation.

CM is controlled by PLC. The whole process from preform feeding to bottle discharging is completed automatically with advantages of labor saving and no pollution. CM consists of three main parts: preform loading system, Heater channel & blow station



技术参数表 / Specification

	HYW50		HYW70			HYW125		
注射装置 / Injection Unit	A	B	A	B	C	A	B	C
螺杆直径 / Screw Diameter (mm)	28	32	28	30	34	36	38	40
螺杆长径比 / Screw L/D Ratio (L/D)	22	19.5	23.5	22.4	19.3	23.9	22	21
理论注塑容积 / Theoretical Shot Volume (cm ³)	61	80	80	96	123	183	204	226
注射重量 / Injection Weight (g)	56	72	74	86	112	167	185	205
注射压力 / Injection Pressure (Mpa)	193	147	281	244	190	207	186	160
螺杆转速 / Screw Speed (rpm)	190		200			180		
合模装置 / CLAMPING UNIT								
合模力 / Clamp Tonnage (KN)	500		700			1250		
移模行程 / Toggle Stroke (mm)	260		252			350		
拉杆间距 / Space Between Tie Bars (mm)	280*260		315*315			390*390		
最大模厚 / Max.mold Height (mm)	280		355			410		
最小模厚 / Min.mold Height (mm)	100		140			180		
顶出行程 / Ejector Stroke (mm)	55		65			100		
顶出力 / Ejector Tonnage (KN)	18		20			38		
顶出杆根数 / Ejector Quantity (PC)	1		1			5		
其它 / OTHERS								
最大油泵压力 / Max.pump Pressure (Mpa)	16		16			16		
油泵马达功率 / Pump Motor Power (Kw)	5.5		7.5			11		
电热功率 / Heater Power (Kw)	4.75		4.75			7		
机器重量约 / Machine Weight (T)	1.48		1.8			3.7		
尺寸 / Dimensions (mm)	3200*1300*1500		3500*1300*1500			4500*1300*1950		
油箱容积 / Oil Tank Capacity (L)	130		160			210		
模板正面尺寸 / Platen Dimensions (mm)								
模板侧面尺寸 / Mould Space Dimensions (mm)								

◆注：以上技术参数均为 50HZ 工作状态下的理论参考值；因技术改进参数恕不另行通知；具体以实物为准，HYW 为连体结构。

技术参数表 / Specification

	HYW130			HYW158			HYW178			HYW218		
注射装置 / Injection Unit	A	B	C	A	B	C	A	B	C	A	B	C
螺杆直径 / Screw Diameter (mm)	38	42	45	40	42	45	42	45	48	48	50	55
螺杆长径比 / Screw L/D Ratio (L/D)	22.1	20	18.6	20	19.1	18	22.5	21	19.7	23.2	21	19
理论注塑容积 / Theoretical Shot Volume (cm ³)	204	249	286	239	263	302	305	350	398	413	510	617
注射重量 / Injection Weight (g)	199	220	253	217	239	275	278	318	362	372	464	561
注射压力 / Injection Pressure (Mpa)	209	171	140	189	171	149	203	176	155	191	177	146
螺杆转速 / Screw Speed (rpm)	185			185			148			190		
合模装置 / CLAMPING UNIT												
合模力 / Clamp Tonnage (KN)	1300			1580			1780			2180		
移模行程 / Toggle Stroke (mm)	350			380			410			470		
拉杆间距 / Space Between Tie Bars (mm)	420*380			430*430			460*460			530*530		
最大模厚 / Max.mold Height (mm)	410			420			500			550		
最小模厚 / Min.mold Height (mm)	150			180			200			190		
顶出行程 / Ejector Stroke (mm)	100			100			117			125		
顶出力 / Ejector Tonnage (KN)	40			55			39			55		
顶出杆根数 / Ejector Quantity (PC)	5			5			5			9		
其它 / OTHERS												
最大油泵压力 / Max.pump Pressure (Mpa)	16			16			16			16		
油泵马达功率 / Pump Motor Power (Kw)	11			15			15			22		
电热功率 / Heater Power (Kw)	9.1			9.6			9.3			16.65		
机器重量约 / Machine Weight (T)	4			5.2			5.6			7		
尺寸 / Dimensions (mm)	4600*1400*1980			4700*1500*2000			5000*1500*1900			6300*1800*2200		
油箱容积 / Oil Tank Capacity (L)	250			260			270			320		
模板正面尺寸 / Platen Dimensions (mm)												
模板侧面尺寸 / Mould Space Dimensions (mm)												

◆All of the above parameters are the theoretical values under the functional mode of 50HZ. we reserve the right to make any technical improvement without prior notice. The details are subject to the latest design. HYW series is the connected structure

技术参数表 / Specification

	HYW268			HYW300			HYW388		
注射装置 / Injection Unit	A	B	C	A	B	C	A	B	C
螺杆直径 / Screw Diameter (mm)	50	55	60	55	60	65	60	65	70
螺杆长径比 / Screw L/D Ratio (L/D)	23.1	21.4	19.6	23.6	21.7	20	22.8	21	19.6
理论注塑容积 / Theoretical Shot Volume (cm ³)	569	688	819	724	862	1011	932.6	1094	1269
注射重量 / Injection Weight (g)	512	626	745	659	784	920	849	995	1154
注射压力 / Injection Pressure (Mpa)	225	169	142	200	168	143	213	182	157
螺杆转速 / Screw Speed (rpm)	170			170			165		
合模装置 / CLAMPING UNIT									
合模力 / Clamp Tonnage (KN)	2680			3000			3880		
移模行程 / Toggle Stroke (mm)	530			610			620		
拉杆间距 / Space Between Tie Bars (mm)	570*570			620*620			670*670		
最大模厚 / Max.mold Height (mm)	570			630			670		
最小模厚 / Min.mold Height (mm)	250			220			350		
顶出行程 / Ejector Stroke (mm)	123			165			170		
顶出力 / Ejector Tonnage (KN)	62			70			90		
顶出杆根数 / Ejector Quantity (PC)	9			9			13		
其它 / OTHERS									
最大油泵压力 / Max.pump Pressure (Mpa)	16			16			16		
油泵马达功率 / Pump Motor Power (Kw)	22			30			37		
电热功率 / Heater Power (Kw)	16.65			18			21.4		
机器重量约 / Machine Weight (T)	9			8.5			13.5		
尺寸 / Dimensions (mm)	6500*1900*2200			6500*1600*2200			7200*2000*2400		
油箱容积 / Oil Tank Capacity (L)	480			550			900		
模板正面尺寸 / Platen Dimensions (mm)									
模板侧面尺寸 / Mould Space Dimensions (mm)									

◆注：以上技术参数均为50HZ工作状态下的理论参考值；因技术改进参数恕不另行通知；具体以实物为准，HYW为连体结构。

技术参数表 / Specification

	HYW400			HYW450			HYW520			HYW620		
注射装置 / Injection Unit	A	B	C	A	B	C	A	B	C	A	B	C
螺杆直径 / Screw Diameter (mm)	65	70	75	70	75	80	75	80	85	80	84	90
螺杆长径比 / Screw L/D Ratio (L/D)	23.7	22	20.5	23.6	22	20.6	22.4	21	19.6	24.5	21	19.6
理论注塑容积 / Theoretical Shot Volume (cm ³)	1200	1392	1598	1500	1723	1960	1942	2210	2495	2100	2492	2861
注射重量 / Injection Weight (g)	1093	1268	1455	1365	1567	1784	1773	2017	2277	1900	2270	2605
注射压力 / Injection Pressure (Mpa)	235	203	177	234	202	176	190	168	148	210	163	141
螺杆转速 / Screw Speed (rpm)	158			158			112			104		
合模装置 / CLAMPING UNIT												
合模力 / Clamp Tonnage (KN)	4000			4500			5200			6200		
移模行程 / Toggle Stroke (mm)	700			760			780			840		
拉杆间距 / Space Between Tie Bars (mm)	730*730			760*760			830*830			880*835		
最大模厚 / Max.mold Height (mm)	780			800			830			880		
最小模厚 / Min.mold Height (mm)	280			300			330			380		
顶出行程 / Ejector Stroke (mm)	180			200			200			250		
顶出力 / Ejector Tonnage (KN)	126			110			145			166		
顶出杆根数 / Ejector Quantity (PC)	13			13			17			12		
其它 / OTHERS												
最大油泵压力 / Max.pump Pressure (Mpa)	16			16			16			16		
油泵马达功率 / Pump Motor Power (Kw)	37			45			45			30+37		
电热功率 / Heater Power (Kw)	23.5			29.3			36.3			42		
机器重量约 / Machine Weight (T)	16			17			20			28		
尺寸 / Dimensions (mm)	7500*1900*2300			7700*1900*2100			8300*2000*2300			8700*2100*2300		
油箱容积 / Oil Tank Capacity (L)	910			1060			1150			1400		
模板正面尺寸 / Platen Dimensions (mm)												
模板侧面尺寸 / Mould Space Dimensions (mm)												

◆All of the above parameters are the theoretical values under the functional mode of 50HZ.we reserve the right to make any technical improvement without prior notice . The details are subject to the latest design.HYW series is the connected structure

技术参数表 / Specification

	HYW650			HYW720			HYW800		
注射装置 / Injection Unit	A	B	C	A	B	C	A	B	C
螺杆直径 / Screw Diameter (mm)	80	90	100	85	95	105	90	100	110
螺杆长径比 / Screw L/D Ratio (L/D)	24.8	22	19.8	24.8	22	19.8	24.4	22	20
理论注塑容积 / Theoretical Shot Volume (cm ³)	2161	2736	3377	2800	3000	3500	2900	3581	4334
注射重量 / Injection Weight (g)	1967	2489	3073	2500	2800	3000	2639	3258	3944
注射压力 / Injection Pressure (Mpa)	224	177	143	195	175	143	227	184	148
螺杆转速 / Screw Speed (rpm)	104			115			110		
合模装置 / CLAMPING UNIT									
合模力 / Clamp Tonnage (KN)	6500			7200			8000		
移模行程 / Toggle Stroke (mm)	930			950			980		
拉杆间距 / Space Between Tie Bars (mm)	910*910			950*950			1000*1000		
最大模厚 / Max.mold Height (mm)	950			960			1050		
最小模厚 / Min.mold Height (mm)	380			400			450		
顶出行程 / Ejector Stroke (mm)	260			280			260		
顶出力 / Ejector Tonnage (KN)	181			210			175		
顶出杆根数 / Ejector Quantity (PC)	17			17			21		
其它 / OTHERS									
最大油泵压力 / Max.pump Pressure (Mpa)	16			16			16		
油泵马达功率 / Pump Motor Power (Kw)	37+37			37+37			37+45		
电热功率 / Heater Power (Kw)	47.5			56.7			58.45		
机器重量约 / Machine Weight (T)	38			39			45		
尺寸 / Dimensions (mm)	9300*2400*2300			9500*2500*2300			9900*2500*2400		
油箱容积 / Oil Tank Capacity (L)	1450			1450			1500		
模板正面尺寸 / Platen Dimensions (mm)									
模板侧面尺寸 / Mould Space Dimensions (mm)									

◆注：以上技术参数均为50HZ工作状态下的理论参考值；因技术改进参数恕不另行通知；具体以实物为准，HYW为连体结构。

技术参数表 / Specification

	HYW1080			HYW1300			HYW1680			HYW2180			HYW2680		
注射装置 / Injection Unit	A	B	C	A	B	C	A	B	C	A	B	C	A	B	C
螺杆直径 / Screw Diameter (mm)	110	115	120	110	120	130	120	130	140	130	140	150	150	185	210
螺杆长径比 / Screw L/D Ratio (L/D)	21.5	20	19.2	26.2	24	22.2	25.2	24	22.3	25.8	24	22.4	22.4	19.7	17.4
理论注塑容积 / Theoretical Shot Volume (cm ³)	4604	5032	5480	5512	6560	7698	7043	8266	9586	9021	10462	12010	15106	26020	33528
注射重量 / Injection Weight (g)	4190	4579	4987	5016	5969	7006	6408	7520	8723	8525	9887	11349	13746	23678	30510
注射压力 / Injection Pressure (Mpa)	173	159	146	204	171	145	183	166	145	190	163	142	210	136	106
螺杆转速 / Screw Speed (rpm)	160			90			85			80			60		
合模装置 / CLAMPING UNIT															
合模力 / Clamp Tonnage (KN)	10800			13000			16800			21800			26800		
移模行程 / Toggle Stroke (mm)	1100			1260			1560			1650			1720		
拉杆间距 / Space Between Tie Bars (mm)	1155*1100			1300*1250			1500*1350			1650*1650			1800*1720		
最大模厚 / Max.mold Height (mm)	1150			1280			1500			1800			1800		
最小模厚 / Min.mold Height (mm)	520			530			700			800			800		
顶出行程 / Ejector Stroke (mm)	320			350			400			420			450		
顶出力 / Ejector Tonnage (KN)	235			254			400			490			430		
顶出杆根数 / Ejector Quantity (PC)	21			21			21			21			21		
其它 / OTHERS															
最大油泵压力 / Max.pump Pressure (Mpa)	16			16			16			16.5			16		
油泵马达功率 / Pump Motor Power (Kw)	45+45			55+55			45+45+45			45+45+55			55+55+55		
电热功率 / Heater Power (Kw)	68.2			86.3			92			110.7			171.4		
机器重量约 / Machine Weight (T)	51			66			100			148			175		
尺寸 / Dimensions (mm)	11800*2600*3800			13500*2750*4500			14500*3500*4230			15500*3750*4500			17000*3900*5100		
油箱容积 / Oil Tank Capacity (L)	1900			2300			2800			3700			4200		
模板正面尺寸 / Platen Dimensions (mm)															
模板侧面尺寸 / Mould Space Dimensions (mm)															

◆All of the above parameters are the theoretical values under the functional mode of 50HZ.we reserve the right to make any technical improvement without prior notice . The details are subject to the latest design.HYW series is the connected structure

配置 / configuration

标准配备

双缸平衡式注射系统；
 多级压力、多级速度射胶调整
 背压调节装置
 差动式高速闭模 安装方便；
 低压模保
 多种液压顶出方式
 机械电气气液压安全装置
 自动润滑系统
 油压安全比例控制
 全电脑控制
 模具记忆系统

Standard features

Double-cylinder balance injection system
 Multi-stage pressure&speed injection
 Back pressure adjustment device
 High speed clamping
 Low pressure mold protection
 Multiple hydraulic elector knock-out
 Mechanical. Electrical&hydraulicsafetydevices
 Auto lubrication system
 Hydraulic pressure fullproportionalcontr
 All computer control system
 Molding data memory system

选择装置

双缸平衡式注射系统；
 液压单组抽插芯
 滚压双组抽插芯
 气顶
 液压旋转脱模
 液压安全保护

Ptional features

Ptional features
 Single hydraulic core pulling and insertin
 Double hydraulic core pulling and insertin
 Air blow
 Hydraulic unscrew device
 Hydraulic safety device

选择配件

机械手
 干燥料斗
 自动上料机
 磁力架
 模具压板
 冷水机
 塑料除湿机
 模温控制机
 油温控制机
 旁路滤油器

Ptional accessory

Robotic pincher
 Hopper dryer
 Autoloader
 Hopper magnet
 Mold clamps
 Water cooler
 Plastic dehumidifier
 Mold temperature controller
 Oiltemperature controller
 Oil bypass filter

标准配件

机械防震脚垫
 加长喷嘴
 备用零件
 工具箱

Standard accessory

Mechanical leveling pad
 Extended nozzle
 Spare parts kit
 Toolbox

Note 注意:

1. 当您在有成型 PC、PA、PMMA、PET、PVC 等工程塑料制品的计划，请让我们知道。
2. 正常情况下改善技术规格参数，不予另行通知除了上述表格中技术规格参数以外，如需更详细资料，请垂询。
3. 产品照片仅供参考，与出售实物略有不同。

1. When you plan to mold plastic products, using PC, PA, PMMA, PET, PVC, materials, please let us know.
2. Product design and technical specifications are subject to change with prior notice. If you need more specifications, please contact us.
3. The machine pictures are for your visual reference. May have slight with the actual machines.

营销网络 / Agencys



我公司设立了二十余家代理服务机构，为国内外客商提供业务咨询，技术支持及售后服务，您可以随时拨打当地海涌塑机的服务热线，我们的业务代表和专业技
 术工程师随时准备为您服务。

Our company has set up more than twenty agencies at home and abroad, they can provide business information, technical support and all sorts of services after sales for you, you can phone and contact any local hai yong plastics machinery service center in your city at any moment, our technicians and professional engineers are ready to service you at any time.

Remarks 说明:

理论注射容量 = (注塑机) 料筒截面积 x 螺杆行程注射重量为 PS 理论容量的 91%。

Theoretical shot volume = (screw cylinder cross section) x (screw stroke)
 The injection shot weight should be 91% of the theoretical shot volume for polystyrene (PS).